

— Reduce —



**RE
DUCE**

Loop project - National research
INTERVIEWS: Entry # 66



INTERVIEWS: Entry # 66

BY:

Liggieri Alessandro
Massimo Angelo
Vullo Alice

ENGINEER



Engineer (cc),
<https://wonderfulengineering.com/wp-content/uploads/2017/06/great-engineer-768x513.jpg>

27-year-old boy,

with a degree in engineering, loves the mountains and cycling.

REDUCING also means wasting less: tell us how you approached this topic both economically and culturally.

Reducing means being aware of how even a piece of paper can affect nature. Reducing paper consumption is important to me for at least three good reasons. The first: it means protecting trees, one of the fundamental barriers against the climate crisis. Less paper is a contribution to contrasting the changes taking place. Second: less paper means less expense, and therefore savings for my family. Third: less paper also translates into less waste, less garbage to collect, even in the wrong places (streets, gardens and sidewalks).



Business copier (cc), <https://pxhere.com/it/photo/1631552>

We consume too much paper, and with this we damage the environment. A family of 4 consumes, in terms of paper, the equivalent of 2 trees per year. I save what is needed on a hardisk, on a PC, in one's own folder, in a special Cloud service.



Documents (cc), <https://pixabay.com/it/photos/carta-lettera-ufficio-mucchio-3941882/>

For those used to using electronic technology, these are really elementary things.

They will allow, another waste avoided, to have the content always with you and to be able to modify it at any time without wasting further paper.

I also avoid printing documents that can be viewed on video: for example, asking to receive bills online saves about 300 grams of paper at a time and you don't pay for sending the document I calculated that a printer could consume up to 63kWh of energy per year: a figure equal to the emission of about 50kg of CO₂ into the atmosphere.

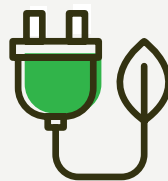
I believe it is one of the tools with a high environmental impact, not only because of its energy consumption but also because of the waste of paper it causes.

Think that only 8% of energy consumption is used in the printing phase, 49% is used when the printer is in standby and the remaining 43% of energy is required to turn off the printer.



Portable hard disk (cc), <https://commons.wikimedia.org/wiki/>

For this reason, we have chosen to install the best energy-saving printer and to pay close attention to the documents to be printed.



WHAT THE REDUCTION INVOLVES

in your activity: give us concrete examples.

In the office we spend a lot of time of our life. The office can be the realm of waste because we often carry out operations in a completely automatic, wrong and wasteful way.

Every day I take a few small steps that don't cost me any effort, but can be very useful, for my wallet and the environment.



Starting with how I get to work: if possible I avoid the private car and use public transport (when it works), or a healthy walk.



City bus, photo by Mitchell Johnson on unsplash, <https://unsplash.com/photos/nd5oU1Duhf0>

We have a place in the office where we store and exchange reusable office supplies, such as binders, envelopes (re-label them) and file folders (by turning them inside out). We have set up a complete recycling system for bottles, cans, copier cartridges, batteries, printer ink cartridges and plastics. It is also important to choose the water of your territory, to avoid journeys of kilometers traveled by road. It may seem trivial, but this question never gets asked enough: why buy something that comes from afar, when it is possible to have purified water at home at a much lower price?



Save water, photo by Jacek Dylag on unsplash, https://unsplash.com/photos/Vve7XkiUq_Y

Not to consider the pollution caused by plastic bottles which, to be produced, require a huge waste of water and oil! Think that to produce a kilogram of PET it takes 1.9 kilograms of crude oil and about 18 liters of water and, during the production process of plastic bottles, various harmful substances are emitted into the atmosphere such as: hydrocarbons, carbon monoxide, nitrogen and sulfur oxide.



The pollution from plastic bottles obviously continues even after use, also because PET is never completely biodegradable. A very serious phenomenon of which we have all acquired awareness and seen numerous images documenting the pollution of the earth, seas and oceans. The ecological footprint of 1 liter of tap water is 2/300 times lower than the liter of bottled water, which is why we have installed a tap water purification system.

Water purificator, photo by Bluewater Sweden on unsplash, <https://unsplash.com/photos/JlPiLtcBbbc>

DID your choice also involve raising awareness among collaborators, or the supply chain? Tell us how you handled these instances.

Separate collection is more effective if every single individual is committed, fighting what are the wrong and sometimes illegal behaviors. Fortunately it was not necessary from the point of view of waste, we therefore focused on reducing the accumulation of useless garbage with the help of children.



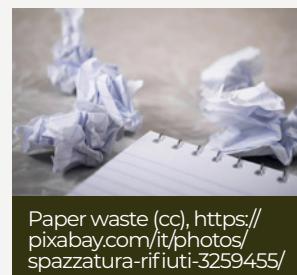
We have limited the use of disposable products: napkins, handkerchiefs and paper towels can be easily replaced by traditional fabric ones. The same goes for razors, plates and glasses.



Separate collection by children, <https://pixabay.com/it/vectors/riciclare-contenitori-ragazza-33605/>

We try to reuse what is thrown into the garbage can every day to build useful and nice objects, encouraging creativity and dexterity especially in children. While in the office instead of a generic bin next to the desks we have several containers for differentiating materials. We have noticed that we are all more careful in choosing the right container to dispose of their waste. Idem for the lunch area.

My colleagues and I believe that if we are not informed about what the lack of separate collection means for our environment, it is very easy to dismiss the subject as something futile. For this reason we inform ourselves about the ecological provisions adopted and the methods of waste collection and we discuss the best ecological choices that can be implemented in the office.



REDUCE

QUESTIONNAIRE

1. What is the so-called “circular economy”?

A	B	C
30%	30%	40%

2. Do you believe that a more sustainable economic system can be equally productive than the current one?

A	B	C
70%	20%	10%

3. Which of these consumer choices have you decided to implement in the last 10 years to protect the environment?

A	B	C
10%	40%	50%

4. How will the so-called “circular economy” affect the job market?

A	B	C
80%	15%	5%

5. In your work, how many strategic choices related to sustainability have been made in the last 10 years?

A	B	C
40%	10%	50%

6. Which of these 4 “Rs” is more important to ensure a better future for humanity?

A	B	C	D
5%	45%	25%	25%

7. Which of these 4 “Rs” is most present in your family’s daily life?

A	B	C	D
40%	10%	30%	20%

8. In your opinion, what link is there between technology and the “circular economy”?

A	B	C
50%	50%	0

9. Do you think we will be able to change the way we consume so as not to affect the environment and its limited resources?

A	B	C
20%	30%	50%

10. Are you familiar with the UN 2030 Agenda or have you ever heard of SDGs?

A	B	C
100%	-	-

QUESTIONNAIRE

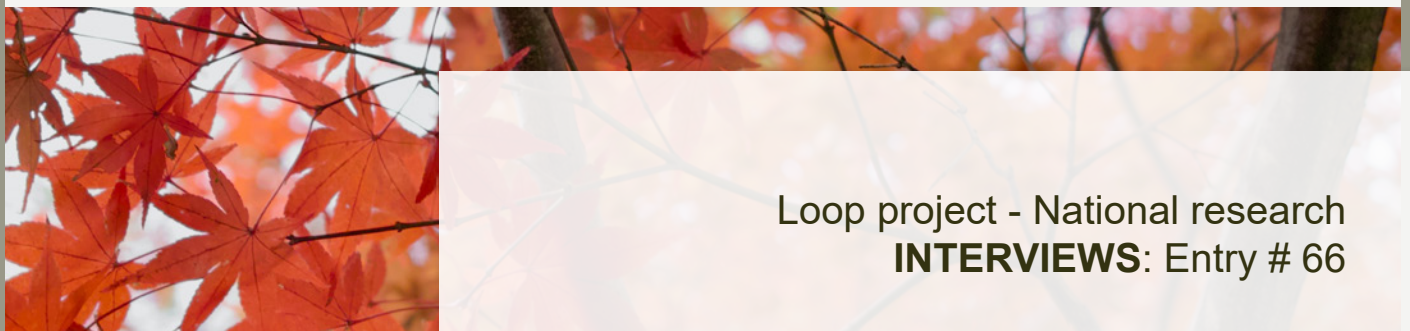
QUESTIONNAIRE

11. Do you think that the economy in the past was more sustainable than it is today?

A	B	C
10%	80%	10%

12. Which of these 3 statements do you consider the most true and important?

A	B	C
45%	55%	0



Loop project - National research
INTERVIEWS: Entry # 66